

# 2-in-1 Coding Technology

More cartridge selections, more ink solutions

## HP

### Technology Features

- + High-speed & high-resolution
- + Versatile ink portfolio



## IUT

### Technology Features

- + Solid 1-inch cartridge design
- + No extra printhead needed for 1-inch print height
- + Available in water/solvent based ink



### Cartridge Key Features

	Print Height	Throw Distance	Print Speed	Print Resolution
HP	0.5"	6 mm	300 m/min	600dpi
FUNAI	1"	6 mm	150 m/min	300dpi
IUT				

### Ink Availability

	Water	Solvent	UV Ink	Invisible Ink	Food Grade Ink
HP	○	○	○	○	—
IUT	○	○	—	—	—
IUT					



A1 Inkjet Printer	
Printing Technology	High Resolution Thermal Inkjet
Cartridge Support	HP & IUT
Display	5" Color LCD Capacitive Touchscreen 480x800 (portrait) (Compatible with most of the medical and industrial gloves.)
Print Height	0.5" Single Printhead: 12.7mm (0.5 inch) Stitch Printheads: 12.7mm x 2 @ 24.75mm (0.98 inch) 1.0" Single Printhead: 25.4mm (1.0 inch) Stitch Printheads: 25.4mm x 2 @ 48.7mm (1.92 inch)
Maximum Printing Resolution	600 DPI
Maximum Printing Speed	60.96 @ 300 DPI & 121 m/min @ 150 DPI
Maximum Print Distance	6mm
Printing Functions	1. Static Data: Text, Shape, and Image 2. Dynamic Data: Variables, Shift, Counter, Date/Time, and Barcodes
Font Type	True Type Fonts: Amiri-Regular, Arimo-Regular, DejaVuSans, NotoSans-Regular, OCR-B, OpenSans-Regular, and Sarabun-Regular Open Type Fonts: NotoSansCJKtc-Medium, NotoSansKR-Regular, NotoSansJP-Regular, and NotoSansTC-Regular
System Language	Arabic, Bulgarian, Serbian, Czech, German, English, Spanish, French, Korean, Italian, Hungarian, Dutch, Japanese, Polish, Portuguese, Russian, Romanian, Slovak, Swedish, Thai, Vietnamese, Turkish, Chinese Traditional, and Chinese Simplified
1D and 2D Barcodes	EAN-8, EAN-13, EAN-14, EAN128, UPCA, UPCE, CODE39, CODE128, ITF14 (SCC-14), NVE18 (SSCC-18), INTER25, CODABAR, PDF417, DATAMATRIX, QR code, GS1 (DataMatrix, DataBar, DataBar EXP, DataBar-Limited, DataBar-Limited Composite, DataBar-Stacked, DataBar-Stacked Composite, QR code), DUN14, and Aztec Code
I/O Ports	1. RJ-45 port x 1 2. Encoder port x 1 3. RS-232/485 port x 1 4. Photocell sensor port x 1 5. I/O port x 1 6. USB 2.0 port x1
Communication Protocols	Modbus TCP IP / UDP, Modbus RTU 485
Dimensions	169.8mm (L) x 136mm (H) x 125mm (W) (6.69 inch x 5.35 inch x 4.92 inch)
Weight	1.8kg (3.97lb) w/o guide plate
Operating Temperature	0°C - 40°C (32°F - 104°F)
Operating Humidity	0% - 90% RH, non-condensing



### ANSER CODING INC.

+886-2-2697-3488 | sales@anser-coding.com  
34F., No.99, Sec. 1, Xintai 5th Rd., Xizhi Dist.,  
New Taipei City 221, Taiwan

Copyright © 2023.04 ANSER CODING INC. All rights reserved.  
The information at hand is provided as available at the time of printing, and ANSER reserves the right to change any information without updating this publication.  
ANSER does not assume any responsibility for any errors or omissions in this publication.

ANSER

PYROTEC  
PACKMARK

Together, We Grow



## ANSER A1 Redefine Your Standard of Cost-Effective Coding Solution



Low Cost of Ownership



Maintenance-Free Coding Solution



Easy Installation & Operation

# Simple in Design Unmatched in Performance

ANSER A1 is designed to minimize the total cost of ownership while maximizing production efficiency and uptime



“Redefine your standard of **cost-effective** coding solution”



Improving your production uptime & efficiency



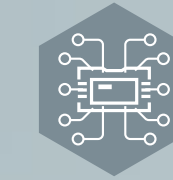
#### Remote & Centralized Control

- + Real-time centralized control & multi-production lines monitoring
- + Support off-site remote service and technical troubleshooting



#### Intelligent Automation

- + Print data from ERP or MES, reduces error by manual data input
- + Production & operation analysis report, enhances factory management quality & control
- + SDK & consulting service, reduces your integration time & cost



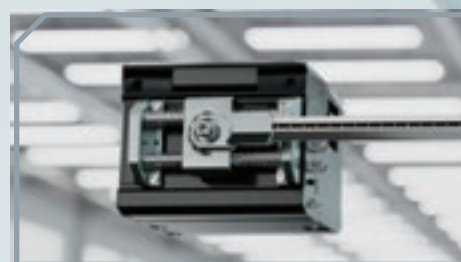
#### Interconnectivity with Peripheral Equipment

- + Easy collaboration with common production equipments, such as barcode scanner or check weigher
- + Multiple open wired cables available for fast & easy equipment integration



#### Eco-Friendly Direct Coding

Reduce label usage and preprinted box wastes to support environmental sustainability



#### Easy Setup & Maintenance

Effortless printer setup with zero operating maintenance requirement to reduce unnecessary expenses



#### Low Cost of Ownership

Advanced software feature to achieve best cost-per-print, making ANSER A1 a true cost-effective coding solution



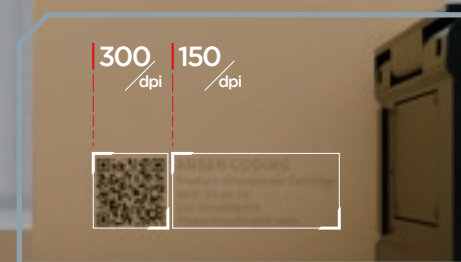
#### Smart Setup Assistant

Simple 3-step setup guidance, allowing you to get your printer up and running in 3-min or less



#### ANSER QuickSwitch

Optimize your production change process to reduce downtime costs. Anser QuickSwitch gets the job done in 1-Quick-Swipe



#### Multi-DPI Setting

Reduce your cost-per-print on select object while maintaining barcode clarity to ensure reliable code readability

